

# Construction Equipment

LOCATION:  
2972 25th St NE, Harvey, ND 58341

# AUCTION

FRIDAY, JUNE 21 | 11AM <sup>2019</sup>

AUCTIONEER'S NOTE: Major equipment begins selling at 11:00 AM. Live online bidding available on major equipment. Registration, terms, & details at [SteffesGroup.com](http://SteffesGroup.com)



## SEMI TRACTORS

**2009 Volvo tri-axle day cab, D13** Volvo, 485 hp., 18 spd., air up/down steerable pusher, air ride cab & seat, spring ride susp., air slide 5th, cruise, mirrors, power windows, mirrors, & locks, Merritt aluminum headache rack, diff lock w/full locking gears, 120 gal. aluminum fuel tank, 2-line wet kit, 20,000 lb. fronts, 46,000 lb. rears, 4:10 rear ratio, 11R22.5 tires, aluminum rims, 148,131 miles

**2009 Volvo tri-axle day cab, D13** Volvo, 485 hp., 18 spd., air up/down steerable pusher, air ride cab & seat, spring ride susp., air slide 5th, cruise, mirrors, power windows, mirrors, & locks, Merritt aluminum headache rack, diff lock w/full locking gears, 120 gal. aluminum fuel tank, 2-line wet kit, 20,000 lb. fronts, 46,000 lb. rears, 4:10 rear ratio, 11R22.5 tires, aluminum rims, 318,167 miles

**1993 Mack CH613 tri-axle day cab, E7** Mack, 350 hp., 9 spd., engine brake, air ride seat, cab & susp., air slide 5th wheel, air down/spring up pusher, cruise, diff lock, dual aluminum fuel tanks, aluminum headache rack, 2-line wet kit, 240" WB, 11R24.5 front tires on steel rims, 11R24.5 tires on aluminum budd rims, 295/75R22.5 pusher tires on aluminum budd rims, 1,094,700 miles

**1990 Mack CH600, day cab, E6** Mack, 350 hp., 9 spd., spring ride, fixed 5th wheel, 2-line wet kit, dual aluminum fuel tanks, 2-line wet kit, quarter fenders, 11R24.5 tires on aluminum budd rims, shows 504,821 miles

**1990 Mack CH613, day cab, 350** Mack, 9 spd., engine brake, air ride cab, camelback rear susp., air slide 5th, auto diff lock, dual aluminum fuel tanks, 2-line wet kit, 204" WB, 11R24.5 tires, aluminum front & rear steel budd rims, 1,426,254 miles

**1988 Freightliner TT10AH126, day** cab, 3406 Cat, 425 hp., 13 spd., engine brake, air ride susp., fixed 5th wheel, heated mirrors, power passenger window, dual 120 gal.

## SEMI TRACTORS

aluminum fuel tank, aluminum headache rack, 2-line wet kit, 246" WB, 11R24.5 tires, aluminum budd rims, 1,396,754 miles

## BOOM/SERVICE TRUCK & GRAVEL TRUCK

**1998 Freightliner FL80 tandem axle, Cat** diesel, 2-pedal autoshift, spring ride susp., 8'x18' service body, 8-compartments, approx. 45' man basket boom, cherry picker, Bobcat 225D welder/generator, 8000 watt, 953 hrs., (4) hyd. outriggers, front winch, full lockers, pintle hitch, shows 25,063 miles, 7,589 hrs.

**1987 Mack RDG86S tri-axle day cab, EM6** Mack, 300 hp., 6 spd. camelback susp., air down/spring up pusher, hand throttle, automatic diff lock, dual steel fuel tanks, 17"x8"x50" gravel box, 11R24.5 tires, front steel budd & rear steel Dayton rims, 396,690 miles

## SIDE DUMP TRAILERS

**2011 Cross Country tri-axle side dump, 42', 34' tub, air up/down tag axle, air ride susp., electric roll tarp, rear push bar, 11R22.5 tires on steel pilot rims**

**2004 Arne's Ultra V Max 50 tri-axle side dump, 35' tub, spring ride susp., rear push bar, 11R22.5 tires on pilot rims**

**1998 Circle R tri-axle side dump, 34' tub, spring ride, rear push bar, 11R24.5 tires on budd rims**

**1998 Circle R tri-axle side dump, 34' tub, spring ride, rear push bar, 11R24.5 tires on budd rims**

## OTHER TRAILERS

**1998 Fontaine tri-axle detach trailer, 48'x102', 24' well, 10" flip-out ext., air ride susp., hyd. lift cyl. for detach, 255/70R22.5 tires, outside aluminum & inside steel pilot rims**

**1989 Trail King TS70CS-482 drop deck trailer, 11' top deck, 37' deck, 10' air ride spread axle, 96" wide, 2 spd. landing gear**

## OTHER TRAILERS

**1972 Timpte tandem axle van body, 40', spring ride susp., converted to office trailer w/parts storage**

**1959 Fruehauf tri-axle tanker, triple tanks, 9,400 gal. total, spring ride susp., 10:00-20 tires on steel Dayton rims**

**1956 Beall aluminum fuel trailer, triple tanks, (2) 1,675 gal., (1) 1,350 gal., 10:00-20 tires on Dayton rims**

**1965 Shop built single axle enclosed trailer, 6'x12', ST175/80R13 tires**

## DOZERS

**Case 1150G LGP dozer, 10' 6-way blade, bolt-on cutting edge, 34" tracks, 5,782 hrs.**

**2002 John Deere 750C LGP dozer, CAH, AM/FM, 12-1/2' 6-way blade, bolt-on cutting edge, 28" tracks, 12,171 hrs., S/N893011**

## LOADERS

**Fiat Allis 605 loader, cab w/heat, 2 spd., 2 yd. bucket, 8-1/2' bolt-on cutting edge, S/N18Y07016**

**Volvo L150 loader, CAH, 4 spd., 5 yd. bucket, 10-1/2' bolt-on cutting edge, 18,236 hrs., S/NL150CV61514**

**Volvo L150 loader, CAH, 4 spd., 5 yd. bucket, 10-1/2' bolt-on cutting edge, 21,890 hrs., S/NL150CV60569**

**Fiat Allis FR15B wheel loader, 4 spd. torque converter, 9' bucket, bolt-on cutting edge, 23.5-25 tires, shows 1,387 hrs., low hours on overhaul, does not move, S/N9E/00354**

## CONSTRUCTION EQUIPMENT

**Powerscreen M85 conveyor, Cummins 4B diesel engine, 76 hp., S/N6101071**

**Powerscreen PS Turbo Chieftain power screen, S/N1401773**

**Pneumatic packer, 13-wheel Pull-type sheepfoot packer, (2) 4' drums**

**Excavator sheepfoot, 42"x3' diameter**

## CONSTRUCTION EQUIPMENT

**(3) heavy duty grizzlies, 12-1/2' wide**

**1980 Comet van, 28'x8', spring ride susp., with Caterpillar SR4 generator, 105 kw, 240/316 amp, 480/158 amp, shelves & workbench, S/N58026278**

**Gomaco GT 3200 curb machine, diesel, starts, moves up & down, does not move forward or back, electrical problem, serviced at Swanson Equipment**

**(2) Concrete buckets**

**Water fill spout, 30", 6"x22" hose Bucket liner, 117"x3/8", for John Deere 744H loader**

**Pallet of serrated grader cutting edges**

**Toolboxes: 14"x20"x12"; 56"x22"x30"**

**Aluminum toolbox**

## TRUCK SCALE

**1994 Thurman truck scale, 48 ton, S/N47118**

## SUV & PICKUPS

**2010 Ford Escape XLT, 4 door, 24 valve gas V6, 4WD, power mirrors, windows, & locks, roof luggage rack, 1" receiver hitch, New 235/70R16 tires**

**2007 Ford F150 Super Crew XLT, 5.4L V8 gas, automatic, 4WD, power driver seat, mirrors, windows, & locks, 6-1/2' box, 275/65R18 tires, 107,699 miles, no toolbox**

**2005 GMC Sierra K3500, ext. cab, 8.1L V8 gas, automatic, 4WD, 8'L x 7' wide fiberglass service body, 6-compartment, electric brake control, 167,218 miles**

**1999 Ford F250 Super Duty, reg. cab, 5.4 V8 gas, automatic, 4WD, power mirrors, windows, & locks, 8' bed w/bedliner, electric brake control, 197,092 miles**

**1998 GMC Sierra K2500, ext. cab, V8 gas, automatic, 4WD, power mirrors, windows, & locks, 8' bed, electric brake control, 234,782 miles**

**1994 Chevrolet, reg. cab, V6 gas, 5 spd. manual, 2WD, 8' bed, 157,130 miles**

**1993 Ford F350 XL, V8 gas, 5 spd. manual, 2WD, 12'x7' aluminum**

## SUV & PICKUPS

flatbed, 6-compartments, rear hyd. lift, 198,490 miles

## OTHER EQUIPMENT

**Case 2670, CAH, 12 spd. partial powershift, 3 hyd., 3 pt., small 1000 PTO, 18.4-38 band duals, 8,070 hrs., S/N9851**

**Virnig snowblower, 87", 24" impeller, single auger, hyd. swivel spout & spout tip, for skid steer loader, S/N68524**

**Degelman R570S reel-type rockpicker**

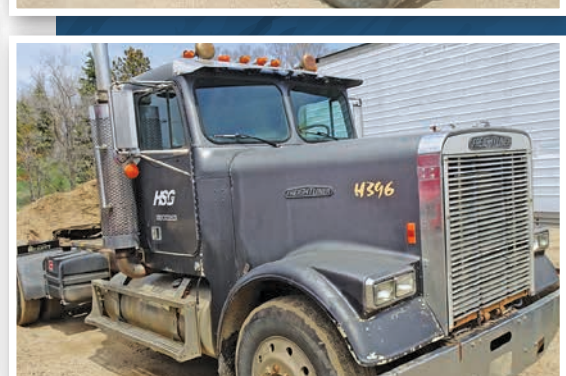
**Disc, 6', 3 pt., notched 18" front blades, smooth 18" rear blades**

## FUEL TANKS

**(2) Fuel tanks, 60"W x 19"H x 22", 12v pump, auto shut-off nozzles**

**L-shaped aluminum fuel tank, 60" W, 12v pump, auto nozzle**

**100 gal. L-shaped fuel tank, 12v pump, shut-off nozzle**



**HARVEY SAND & GRAVEL**  
**Susan Shearer, 701.324.4671**

or Dave Benedict at Steffes Group, 701.237.9173 or 701.238.5062

**SteffesGroup.com**

Steffes Group, Inc., 2000 Main Avenue East, West Fargo, ND 58078 | 701.237.9173

Scott Steffes ND81, Brad Olstad ND319, Bob Steffes ND82, Max Steffes ND999, Justin Ruth ND2019, Ashley Huhn ND843, Eric Gabrielson ND890, Randy Kath ND894, Scott Gillespie ND1070, Shelly Weinzettl ND963



TERMS: All items sold as is where is. Payment of cash or check must be made sale day before removal of items. Statements made auction day take precedence over all advertising. \$35 documentation fee applies to all titled vehicles. Titles will be mailed. Canadian buyers need a bank letter of credit to facilitate border transfer.

